

Google Android Phone OS application and operation

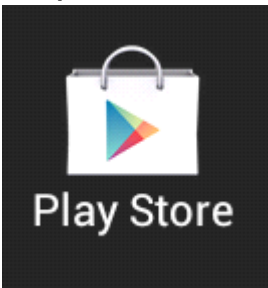
System requirements :

1. Operation systems : Google Android 2.1 or later.
2. Wireless network support (GPRS/ 3G/ Wifi...etc.)

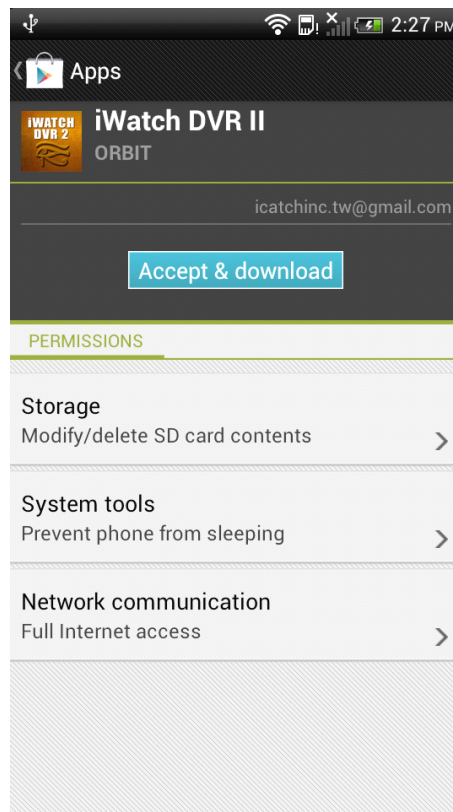
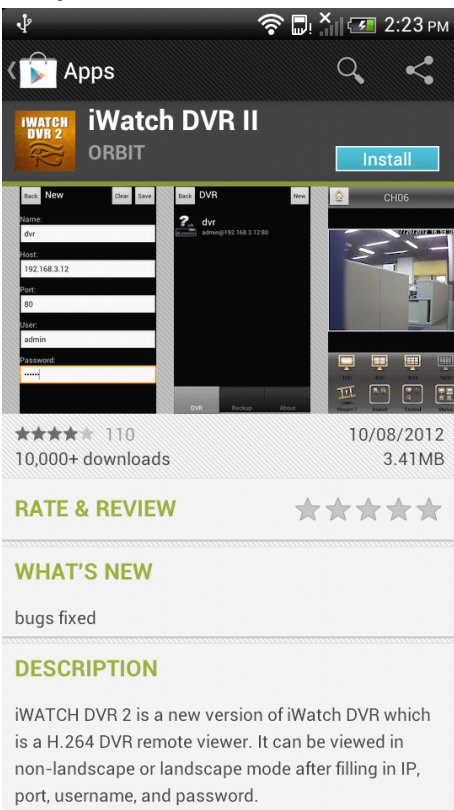
To activate remote viewing through mobile devices, please follow the instructions for software installation:

**You must have your mobile devices connected to the internet before installation.*

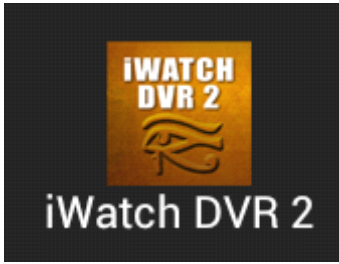
Step.1 Select "**Play Store**"



Step.2 Search "iWatch DVR II" install and Accept & Download.

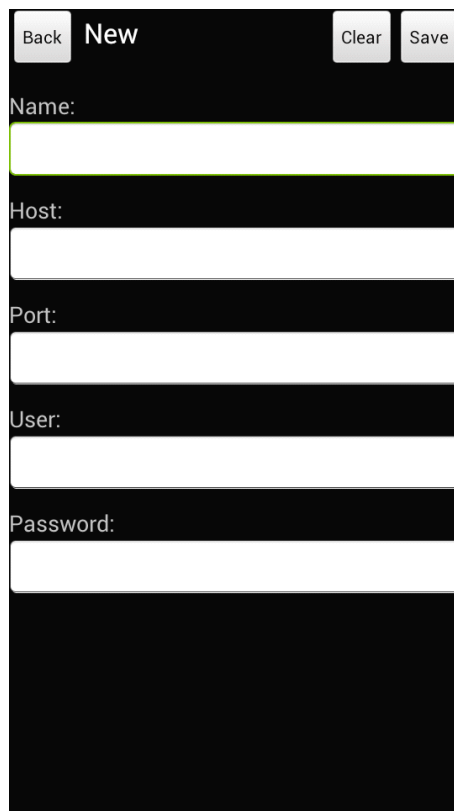
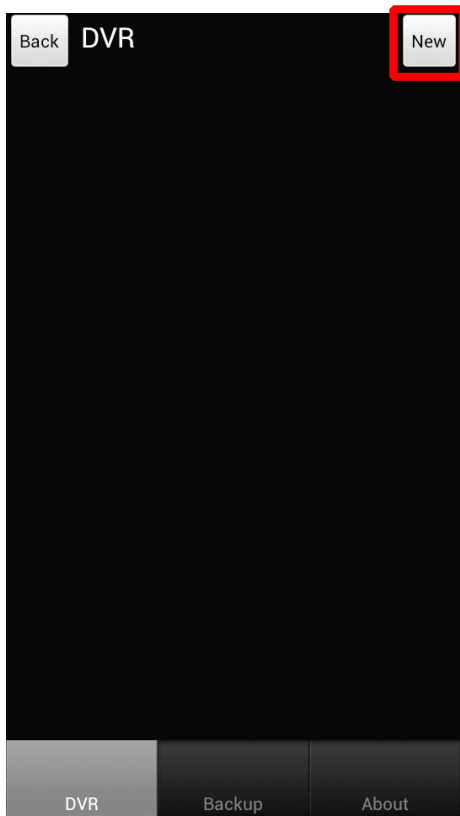


Step.3 Run "iWatch DVR 2"



Step.4 Click New to Create Connection.,

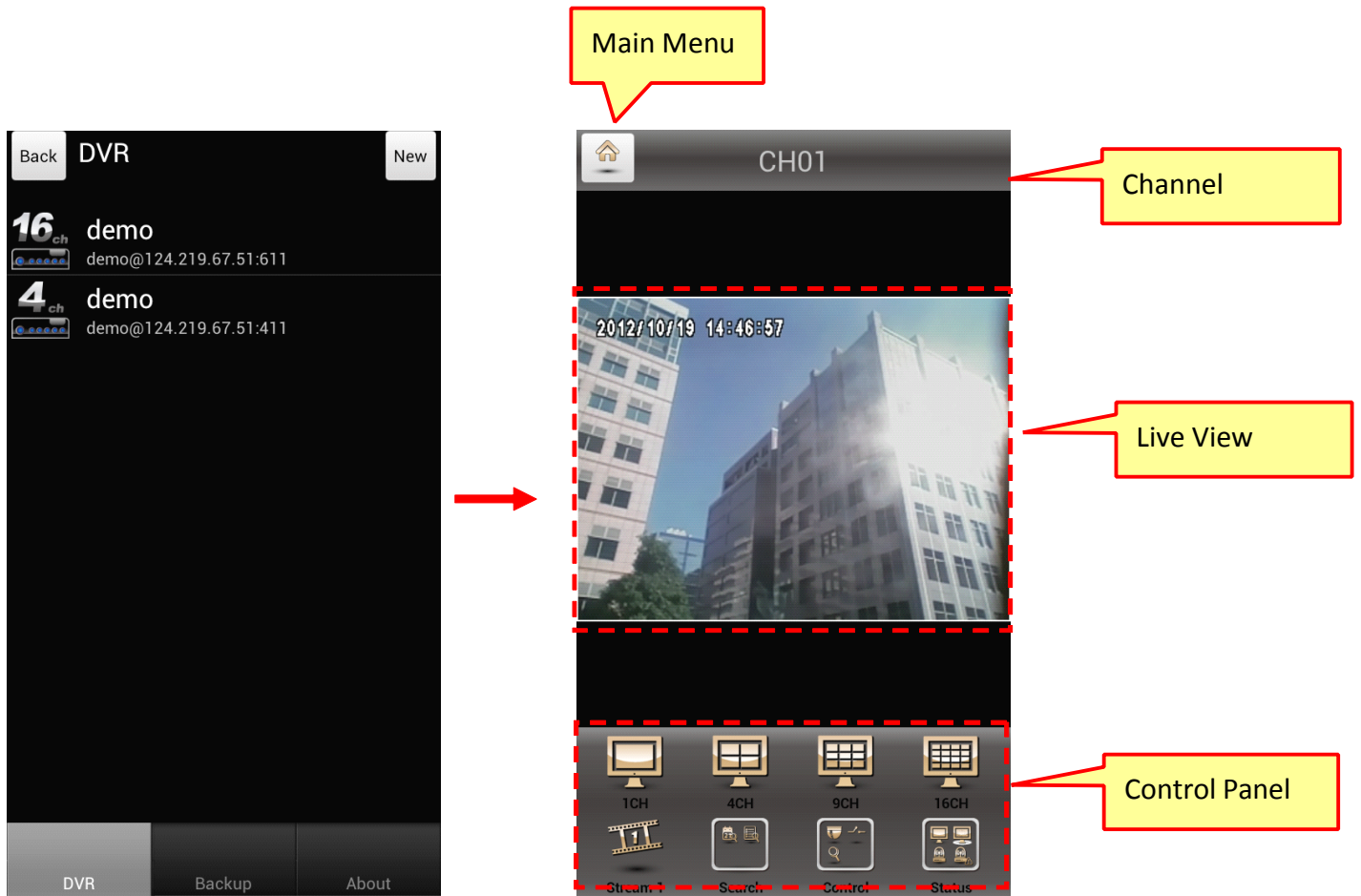
Step.5 Type in DVR's name, Host (IP address), Port, User name, and Password.



3. Using the System-

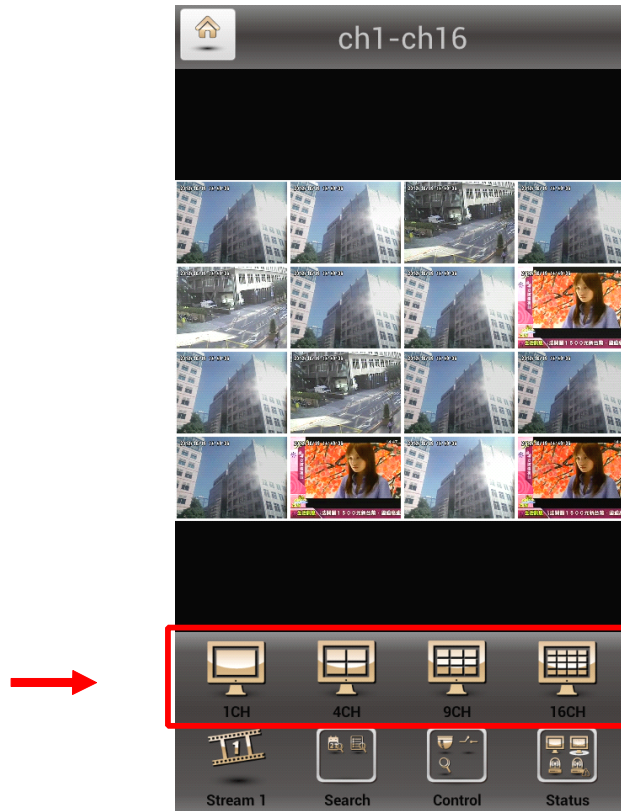
- Live View

This application allows you to store multiple sets of DVR, choosing one DVR to connect and to view the screen.

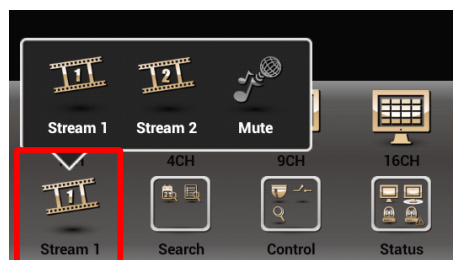


Depending on the quality of network connection, the time to make the successful connection would be different.

You can choose the quantity of scree you'd like by pressing the buttons "1CH/4CH/9CH/16CH."

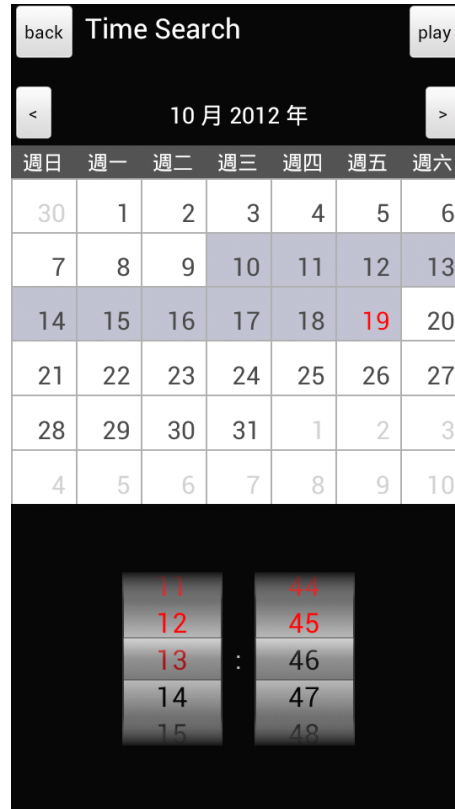
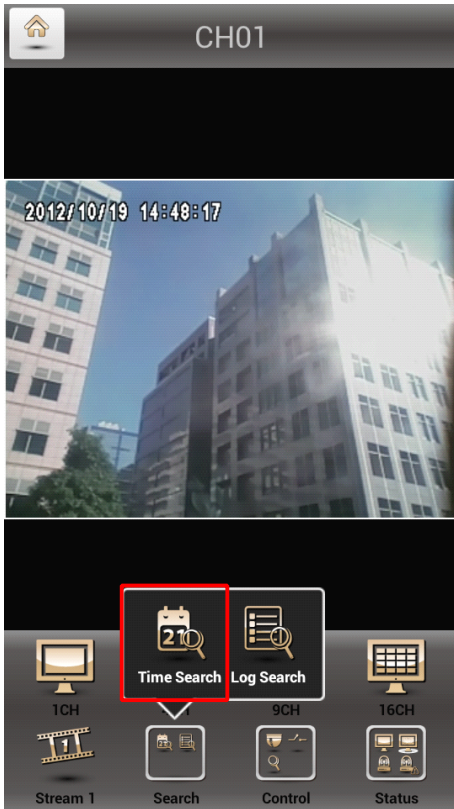


And you can choose the better connection by switching from Steam No.1 and No.2



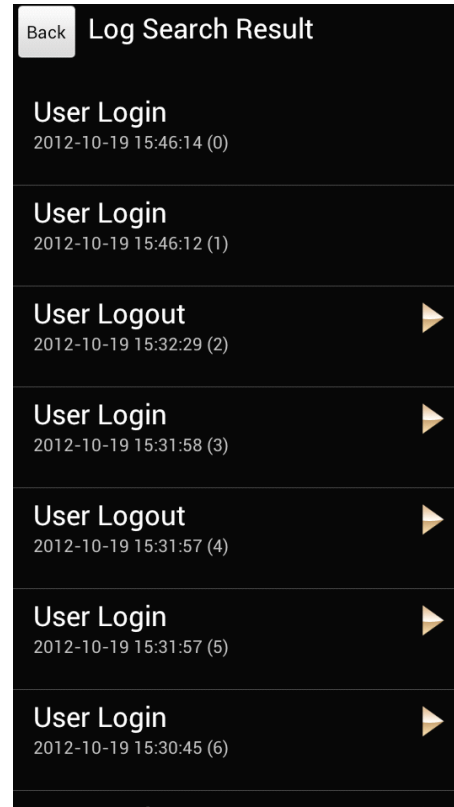
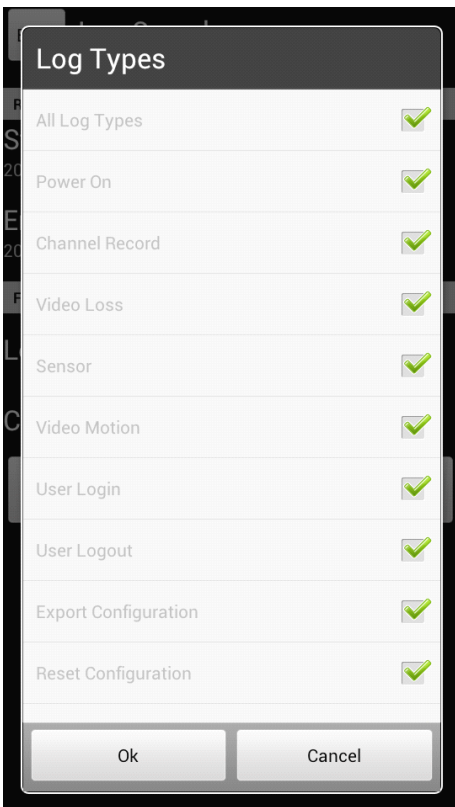
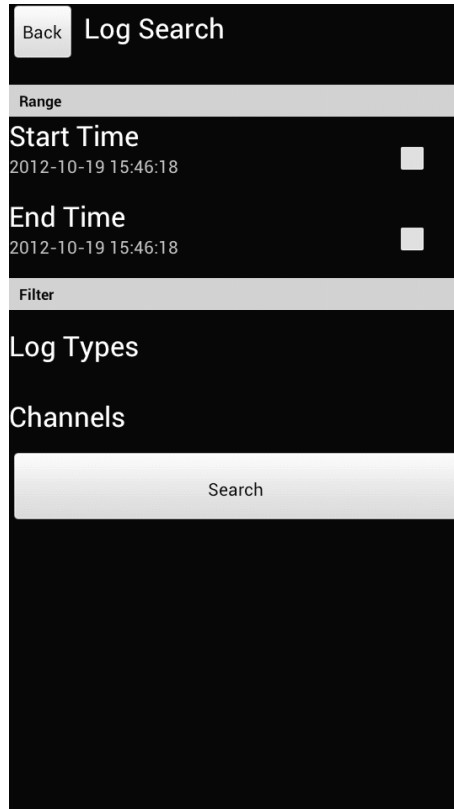
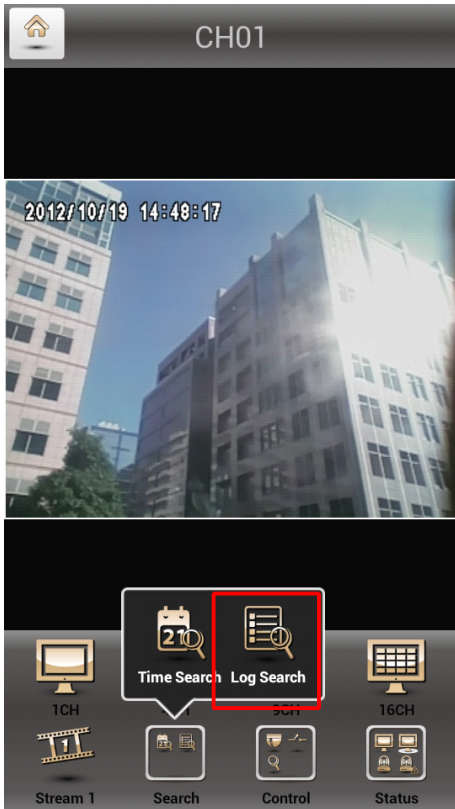
- Time Search

This method of video search also displays the date and time of the DVRs current recordings and allows you to select the specific date and time that you'd like to view.



- Log Search (Event Search)

The event list displays a list of motion detected events and other events as well as the time and date that they occurred. You can select the event that you want to view to jump to that specific event.



3

- PTZ Control

Press the PTZ button in the folder of "Control" to activate the PTZ controlling function.



- (1) Zoom +: Zoom in
- (2) Zoom -: Zoom out
- (3) IRIS+: Increase brightness
- (4) IRIS-: Decrease brightness
- (5) Focus+: Manually adjusting the focus
- (6) Focus -: Manually adjusting the focus
- (7) Set Preset: Setup the preset points
- (8) Go Preset: Sequential switch to the preset points

- Relay

It can control the connection relay on DVR. Each relay can be controlled separately.
You can choose form " N.O.(Normal Open), N.C.(Normal Close), Auto"

